

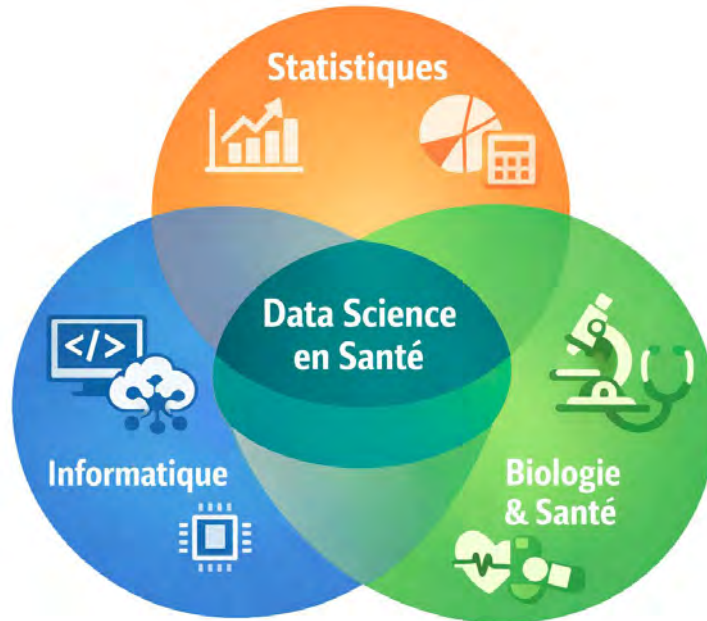
Master Ingénierie de la Santé Parcours Data Science en Santé

Une opportunité pour la recherche

Antoine Lamer

Master Ingénierie de la Santé

Parcours Data Science en Santé



- Création en 2018
- ~ 25 étudiants / an

ARKHN

KAP CODE



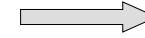
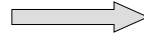
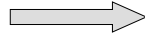
SANOFI



Université de Lille

Centre Oscar Lambret

De la collecte des données à l'intelligence artificielle



Une opportunité pour la recherche Enseignements


> [Stud Health Technol Inform.](#) 2024 Aug 22;316:388-392. doi: 10.3233/SHTI240429. 

Public Availability of Data Management and Analysis Scripts of Studies Conducted on Open-Access Intensive Care Databases

Coline Andries^{1 2}, Paul Quindroit³, Benjamin Popoff^{4 5}, Ikram Oudarrour^{1 2}, Antoine Lamer^{1 2 3 5}



Coline Andries, ULR2694 Metrics, UFR3S-ILIS

> [Stud Health Technol Inform.](#) 2025 May 15;327:1069-1073. doi: 10.3233/SHTI250547. 

Exploring Data Science Students' Engagement, Usage Patterns, and Perceptions of Large Language Models in Programming

Lilia Khendek^{1 2}, Antoine Teston^{2 3}, Chloé Saint-Dizier^{1 2 3}, Antoine Lamer^{1 2 3}



Lilia Khendek, ULR2694 Metrics, UFR3S-ILIS

Une opportunité pour la recherche

Stages M1 M2

Observational Study > BMC Med. 2025 Dec 5;24(1):20. doi: 10.1186/s12916-025-04558-1.

Nationwide trends in pediatric hospitalizations for eating disorders in France between 2013 and 2022: a retrospective study using the national health insurance database

Emmanuelle Logeais¹, Françoise Troussier², Antoine Lamer^{3 4 5}, Marion Hendrickx^{4 6}, Mathieu Levaillant^{7 8}, Lilia Khendek^{4 5}



Lilia Khendek
F2RSM Psy

Table 1 Patient characteristics

	2013 (N = 2095)	2022 (N = 4488)	
Age (years)	15 (13—17)	15 (14—17)	$p = 0.049$
- 6–9	114 (5.4)	145 (3.2)	
- 10–12	453 (21.6)	842 (18.8)	
- 13–15	938 (44.8)	2290 (51)	
- 16–18	590 (28.2)	1211 (27)	
Male	353 (16.8)	476 (10.6)	$p < 0.01$
Diagnosis			
Typical and atypical anorexia nervosa	1325 (63.2)	2608 (61.1)	$p < 0.01$
Typical and atypical bulimia nervosa	322 (15.4)	516 (11.1)	$p < 0.01$
Binge eating associated with other psychological disturbances	281 (13.4)	459 (10.2)	$p < 0.01$
Other nonorganic eating disorders	287 (13.7)	971 (21.6)	$p < 0.01$
Comorbidities			
Schizophrenic/delusional disorders	22 (1.1)	40 (0.9)	
Mood disorders	343 (16.4)	840 (18.7)	
Anxiety disorders, OCD	222 (10.6)	931 (20.7)	$p < 0.01$
Severe undernutrition	389 (18.6)	1055 (23.5)	$p < 0.01$
Malnutrition	159 (7.6)	238 (5.3)	
Vitamin deficiencies	47 (2.2)	216 (4.8)	
Trace element deficiencies	10 (0.5)	28 (0.6)	
Other electrolyte imbalances	32 (1.5)	117 (2.6)	

* Quantitative values are expressed as medians and quartiles (Q1–Q3)

** Qualitative values are expressed as counts and percentages (%)

Une opportunité pour la recherche

Stages M1 M2

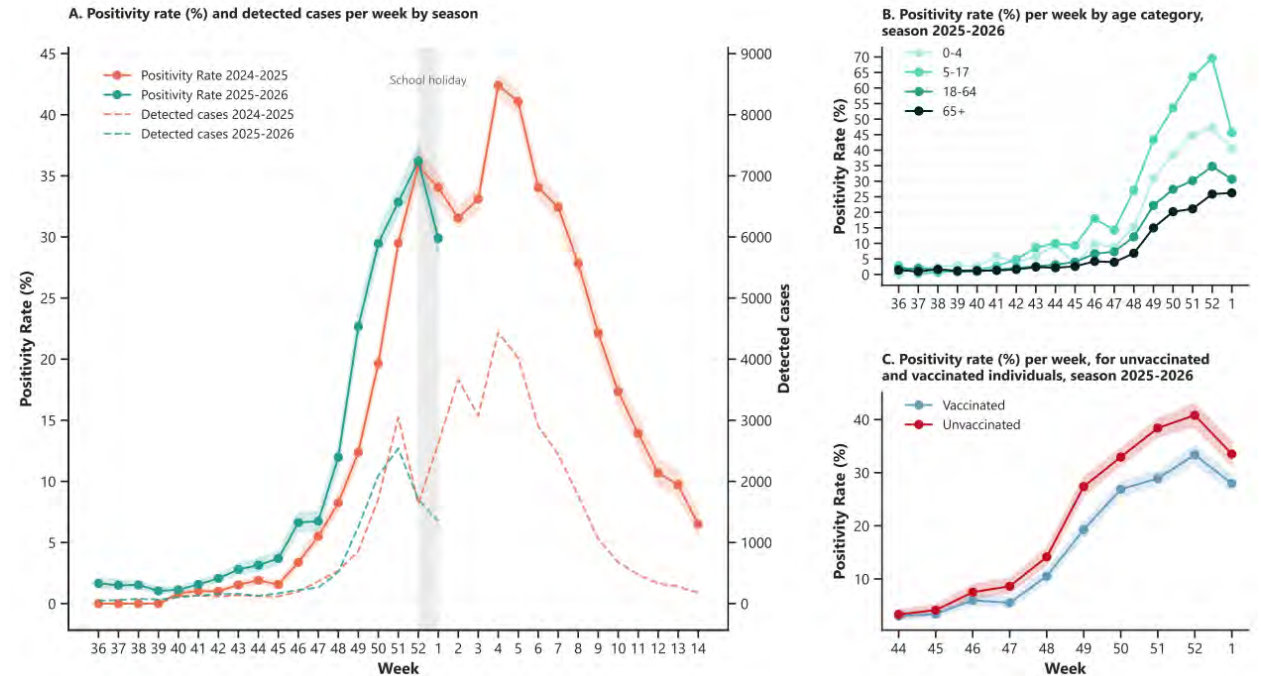
> Euro Surveill. 2026 Jan;31(2):2500992. doi: 10.2807/1560-7917.ES.2026.31.2.2500992. 

Interim vaccine effectiveness against influenza virus among outpatients, France, October 2025 to January 2026


Allan De Clercq^{1 2}, François Blanquart³, Vincent Vieillefond⁴, Benoit Visseaux⁵, Alexandra Jacques⁶, Stéphanie Haim-Boukoba⁷, Valentin Wehrle⁸, Guillaume Deleglise⁹, Thomas Duret⁹, Sibylle Bernard-Stoecklin¹⁰, Danielle Perez-Bercoff¹¹, Antoine Oblette^{1 12}, Bruno Lina^{1 12}, Marie Anne Rameix-Welti^{11 13}, Laurence Josset^{1 12}, Vincent Enouf¹¹, Antonin Bal^{1 12}, RELAB study group¹⁴



Allan De Clercq
Hospices Civils de Lyon



Une opportunité pour la recherche Mémoires

> [JMIR Public Health Surveill.](#) 2024 Aug 27;10:e52759. doi: 10.2196/52759. 

Association Between COVID-19 and Self-Harm: Nationwide Retrospective Ecological Spatiotemporal Study in Metropolitan France

Maëlle Baillet ^{1 2}, Marielle Wathelet ^{3 4 5}, Antoine Lamer ^{1 2 4}, Camille Frévent ¹,
Thomas Fovet ³, Fabien D'Hondt ^{3 5}, Charles-Edouard Notredame ³, Guillaume Vaiva ³,
Michael Génin ¹



Maëlle Baillet
ULR2694
Metrics



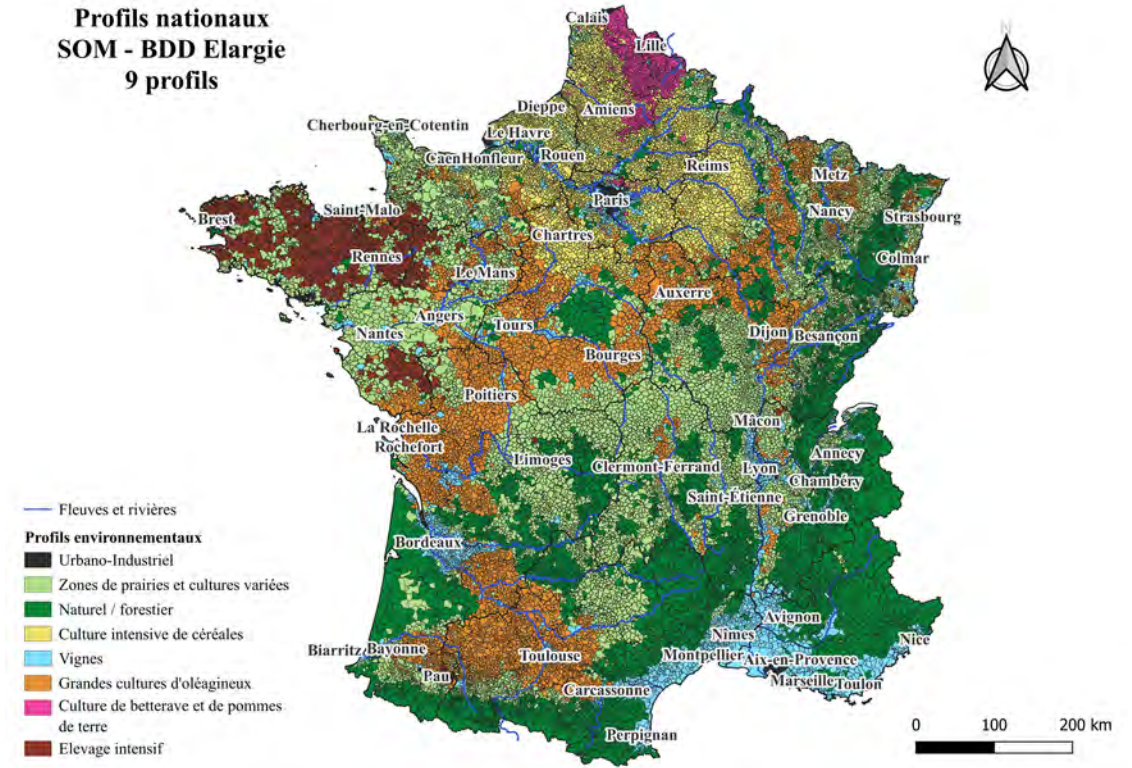
Une opportunité pour la recherche Thèses

La Santé Environnementale des Territoires :
Comment mobiliser les données
environnementales ouvertes pour analyser les
profils de multi-contamination des territoires et
évaluer leur poids sur les inégalités spatiales de
santé ?



Tracy Lurant, ULR 4515, LGCgE, SIGLES

Profils nationaux
SOM - BDD Elargie
9 profils



Merci pour votre attention



Antoine Lamer

Data Scientist at F2RSM - Assistant
Professor at ILIS Faculté Ingénierie et...



antoine.lamer@univ-lille.fr